

STUDY AREA AND EXISTING PIPE CAPACITY

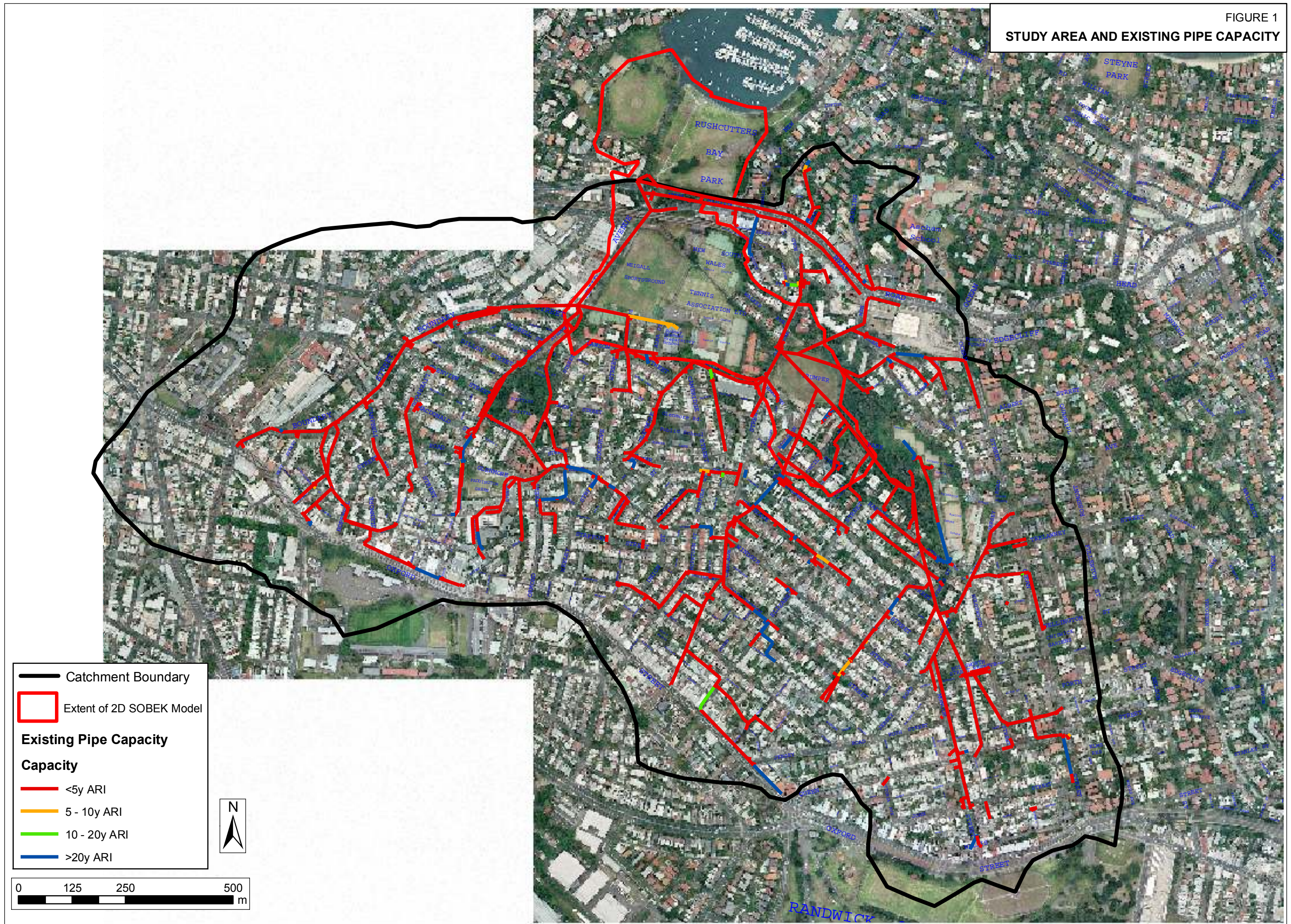
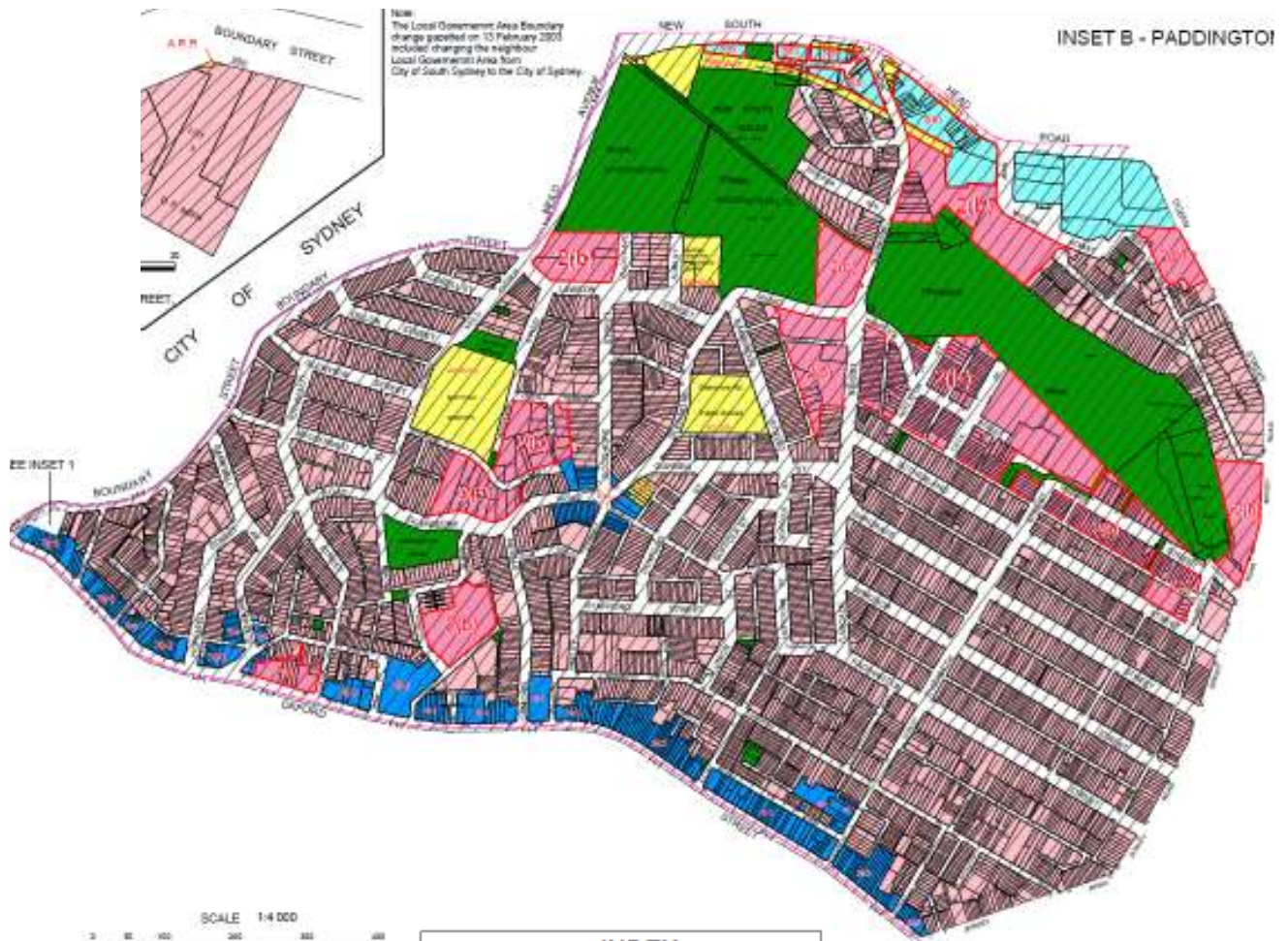


FIGURE 2
LEP ZONES



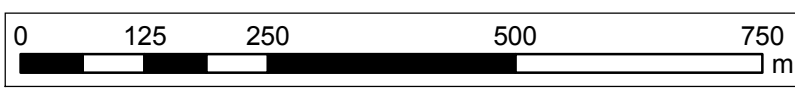
INDEX	
ZONES	
2. RESIDENTIAL:	
(a) RESIDENTIAL "A"	
(b) RESIDENTIAL "B"	
3. BUSINESS:	
(a) BUSINESS GENERAL	
(b) BUSINESS SPECIAL	
(b1) BUSINESS SPECIAL (RESTRICTED)	
(c) BUSINESS NEIGHBOURHOOD	
5. SPECIAL USES:	
EXISTING (SCHOOLS, CHURCHES...)	
ARTERIAL ROAD RESERVATION (A.R.R.) - PROPOSED ROAD WIDENING	
LOCAL ROAD RESERVATION (L.R.R.) - PROPOSED ROAD WIDENING	
6. OPEN SPACES:	
GENERAL RECREATION	
REGIONAL OPEN SPACE RESERVATION	
LOCAL OPEN SPACE RESERVATION	
8. NATIONAL PARKS AND NATURE RESERVES	
GENERAL	
1. LOCAL GOVERNMENT AREA BOUNDARY	
2. EXISTING ARTERIAL / MAIN ROAD	
3. FORESHORE SCENIC PROTECTION AREA	
4. HARBOUR FORESHORE SCENIC PROTECTION AREA	
5. AREAS EXCLUDED FROM THE PLAN	
6. LAND IN DOUBLE BAY TO WHICH CLAUSE 20 APPLIES	
7. LAND IN DOUBLE BAY TO WHICH CLAUSE 21E(10) APPLIES	

FIGURE 3
100y ARI OVERLAND FLOWS

Catchment Boundary

100y Overland Flows (m³/s)

- 0 - 0.5
- 0.5 - 1
- 1 - 2
- 2 - 5
- 5 - 10
- 10 - 20



Note: The overland flow route is shown as the straight line path between the upstream and downstream pits. This does not necessarily reflect the actual flow path down streets or between buildings

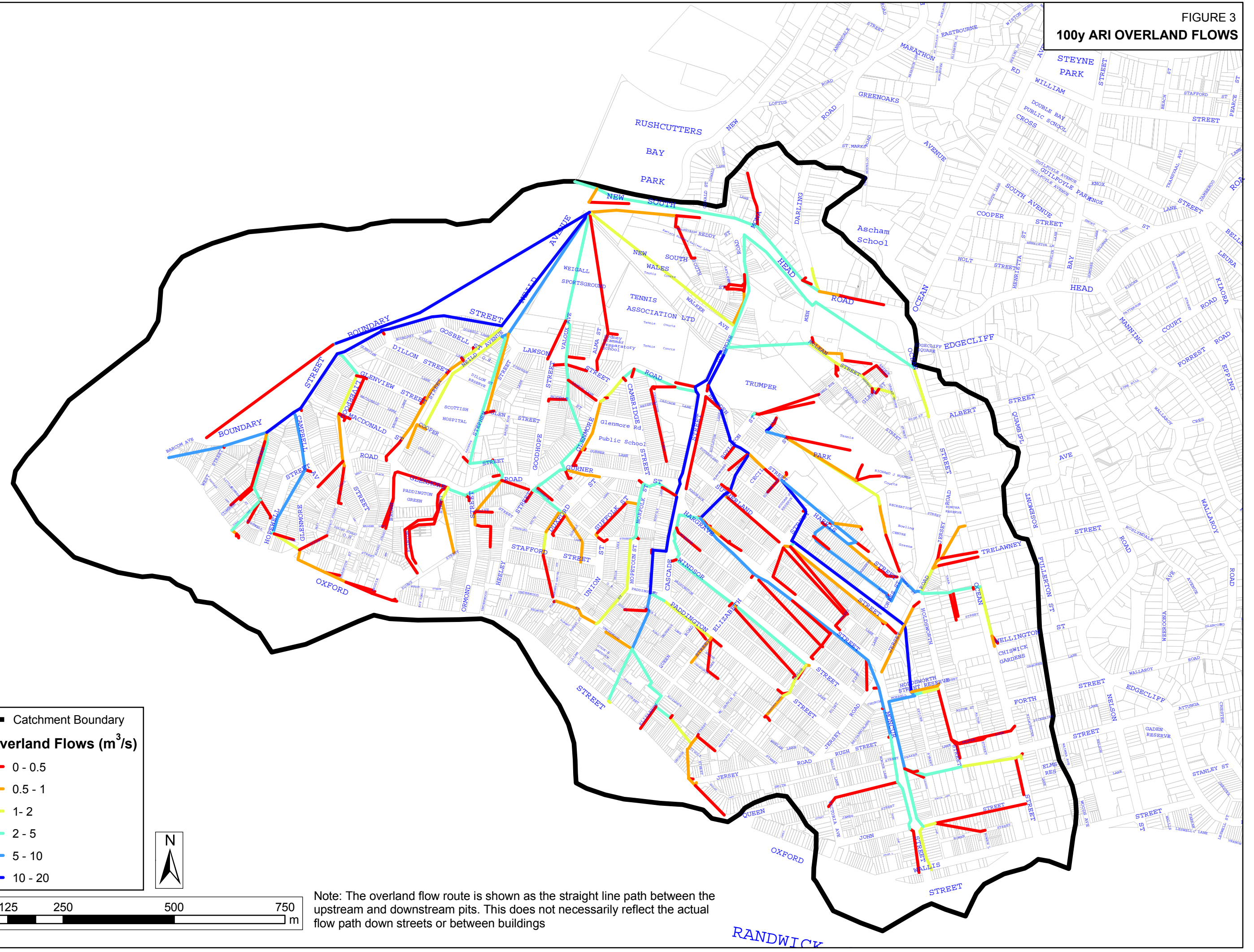
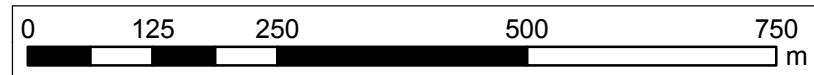
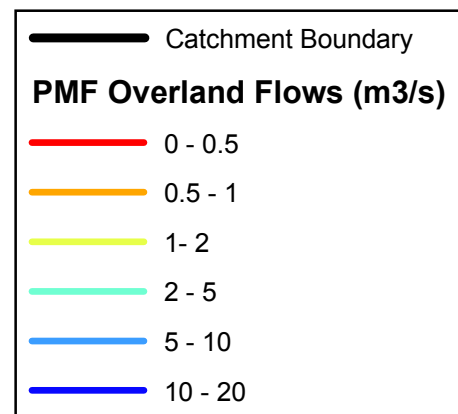


FIGURE 4
PMF OVERLAND FLOWS



Note: The overland flow route is shown as the straight line path between the upstream and downstream pits. This does not necessarily reflect the actual flow path down streets or between buildings

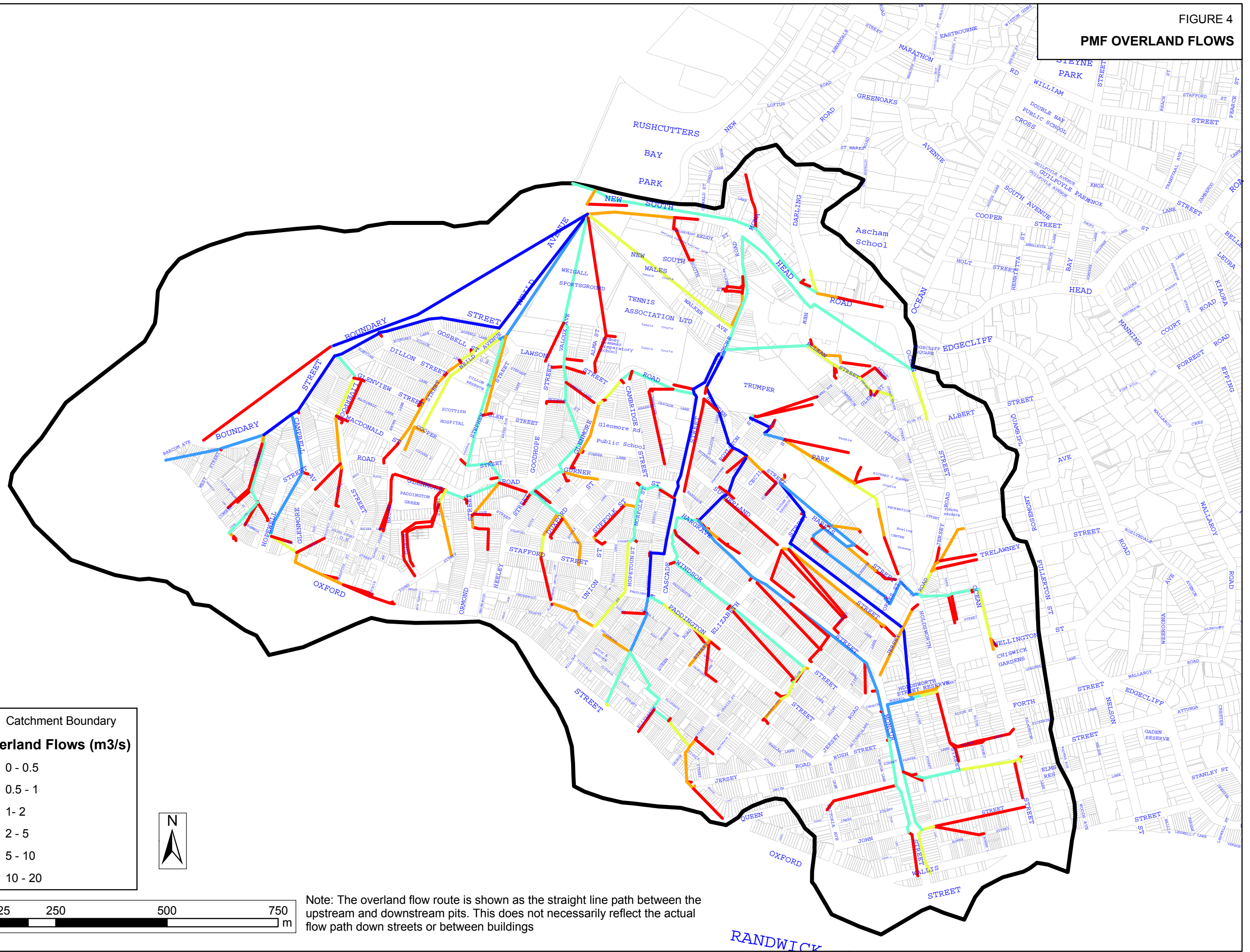
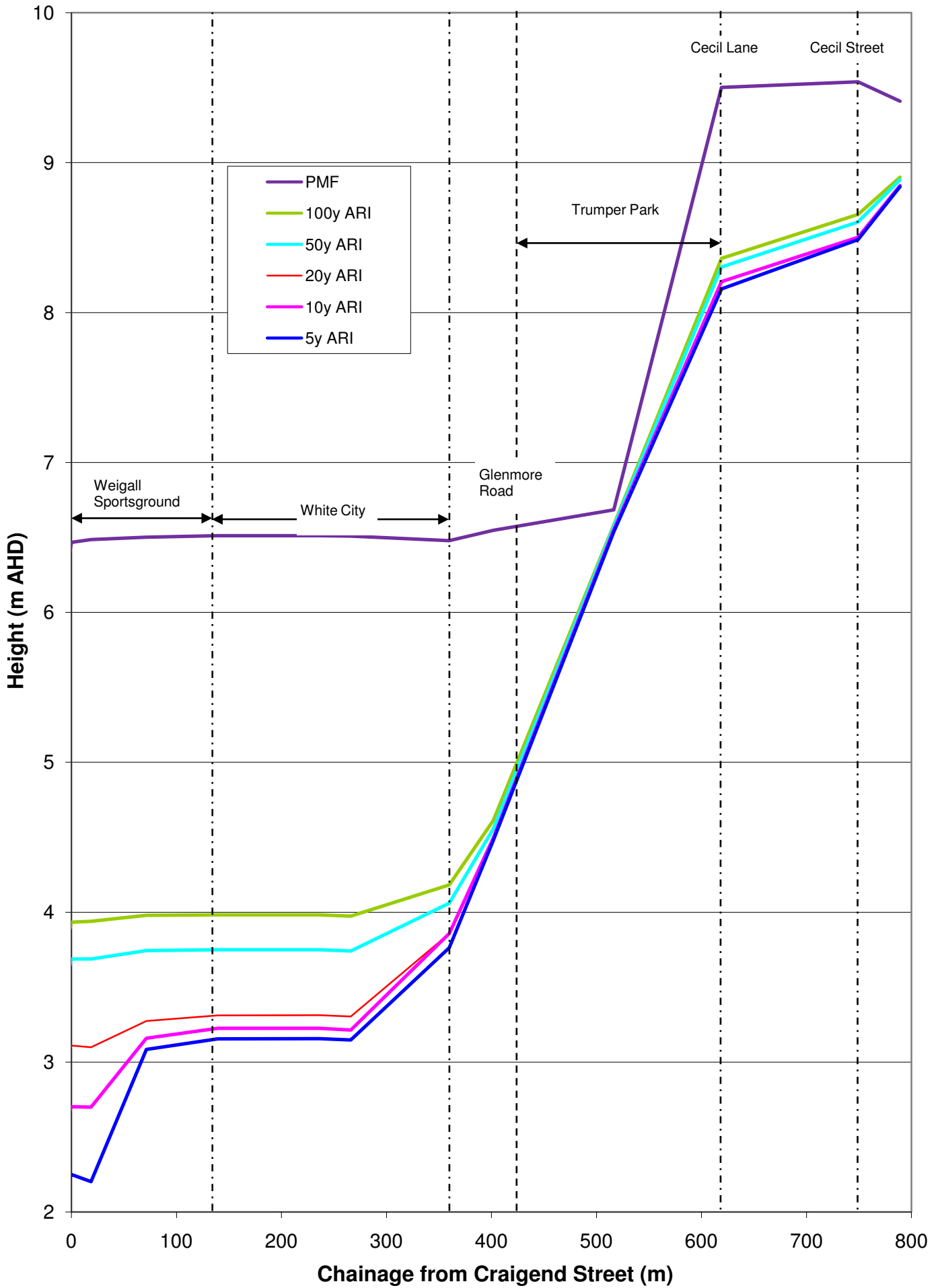
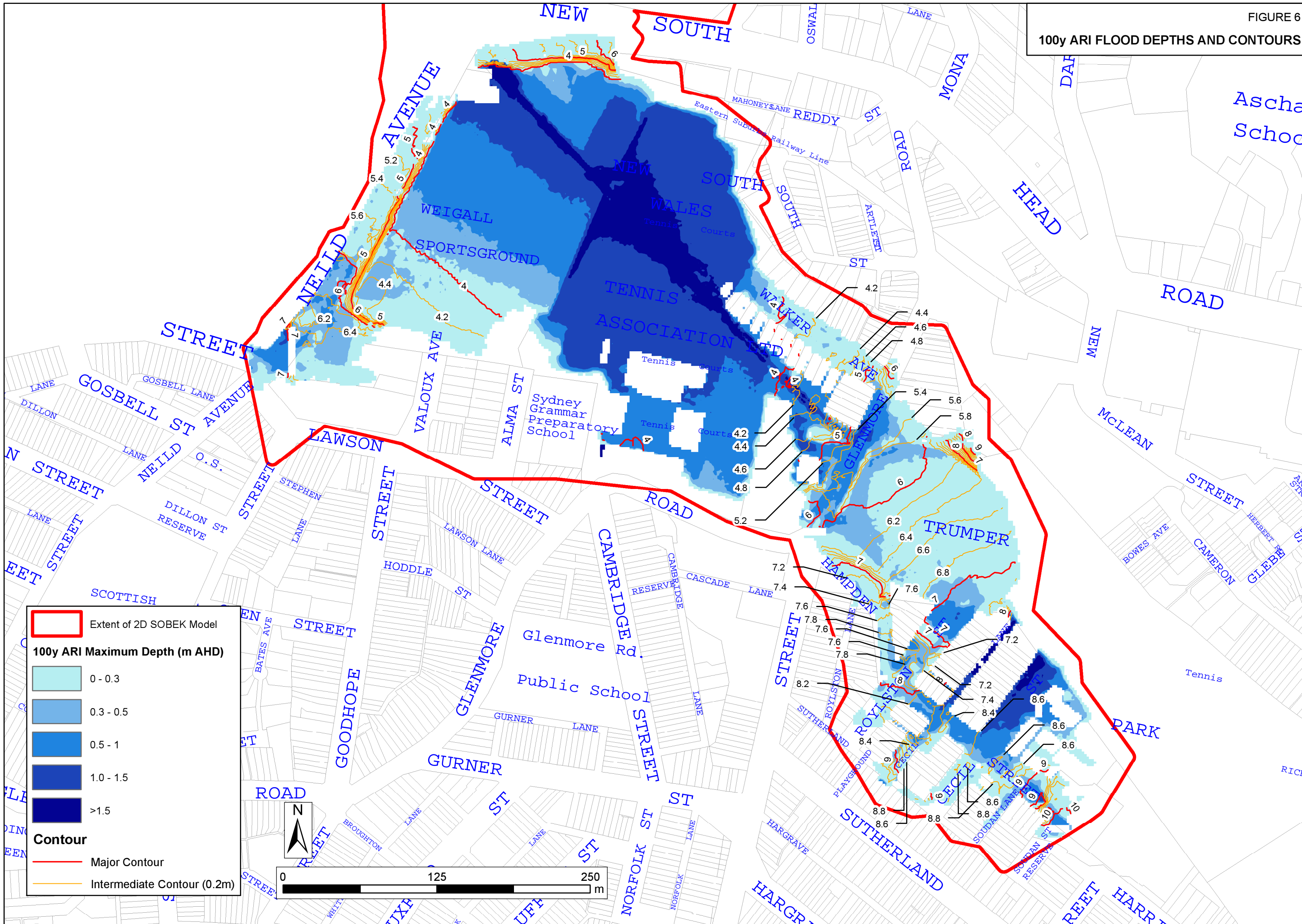
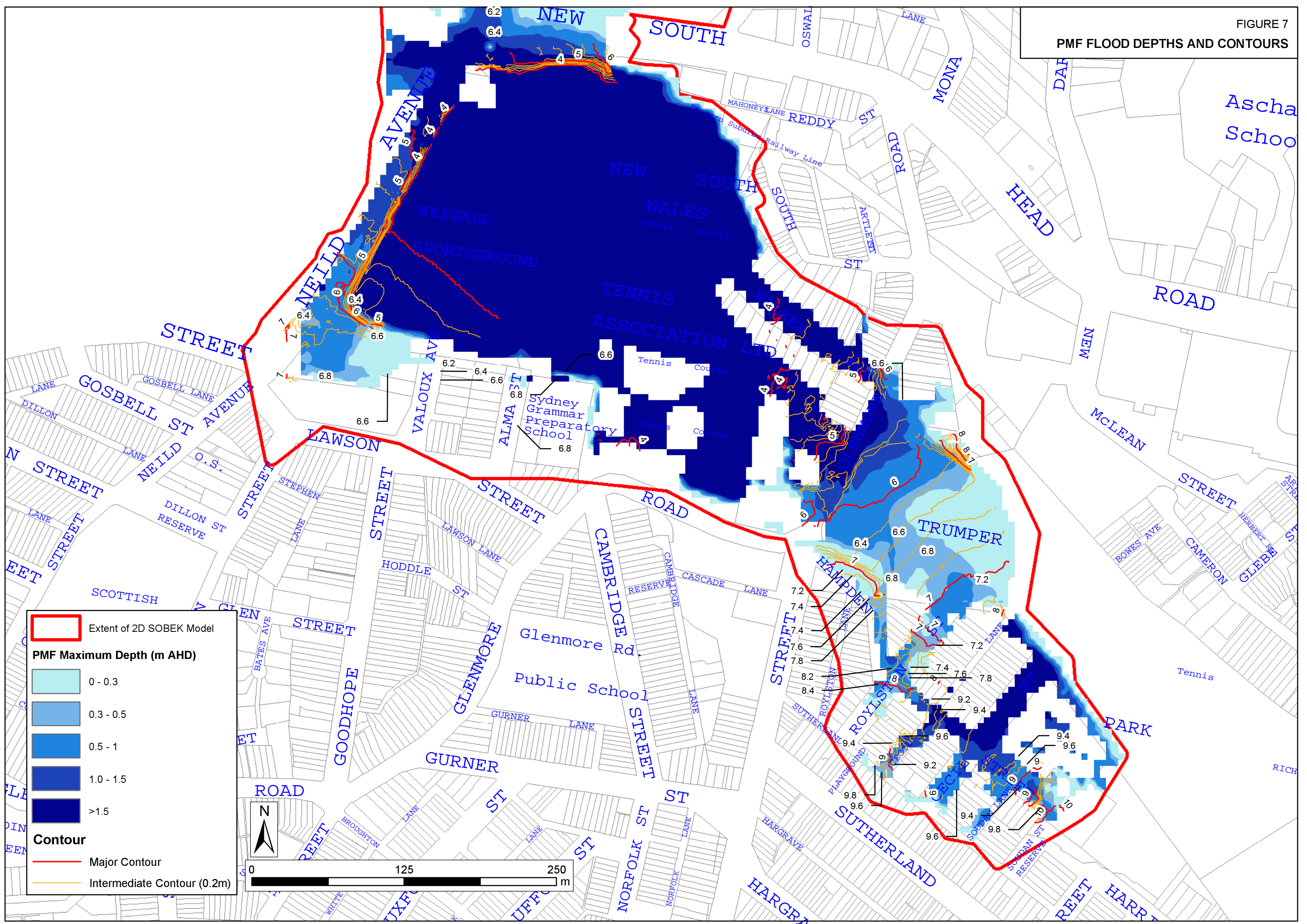


FIGURE 5
**PEAK HEIGHT PROFILES
 LOWER CATCHMENT**



100y ARI FLOOD DEPTHS AND CONTOURS





Extent of 2D SOBEK Model

PMF Maximum Depth (m AHD)

- 0 - 0.3
- 0.3 - 0.5
- 0.5 - 1
- 1.0 - 1.5
- >1.5

Contour

- Major Contour
- Intermediate Contour (0.2m)

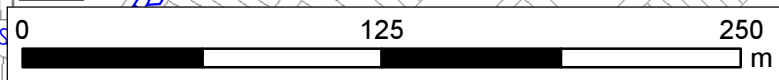


FIGURE 8
FLOODPLAIN CATEGORISATION 100y ARI

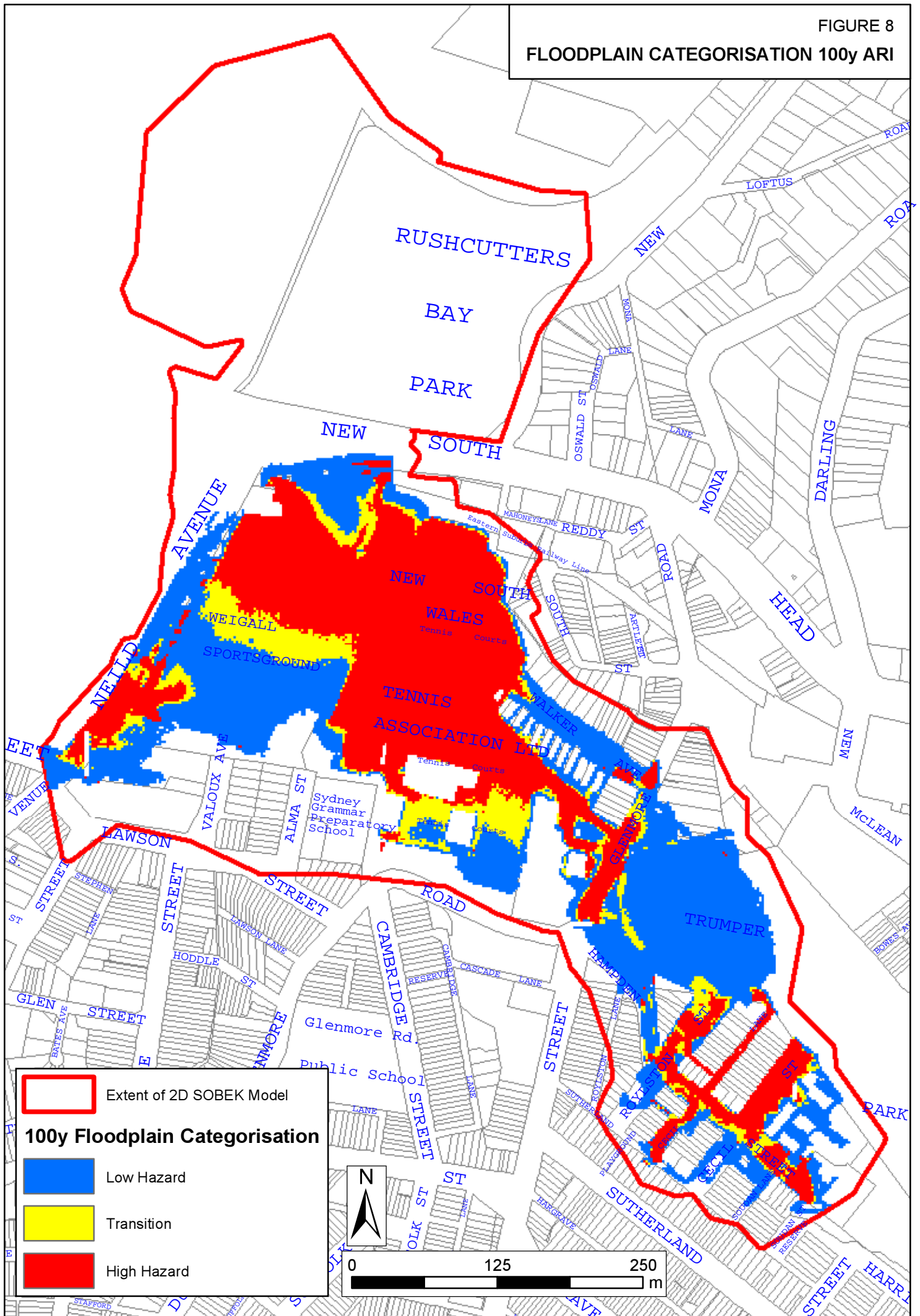
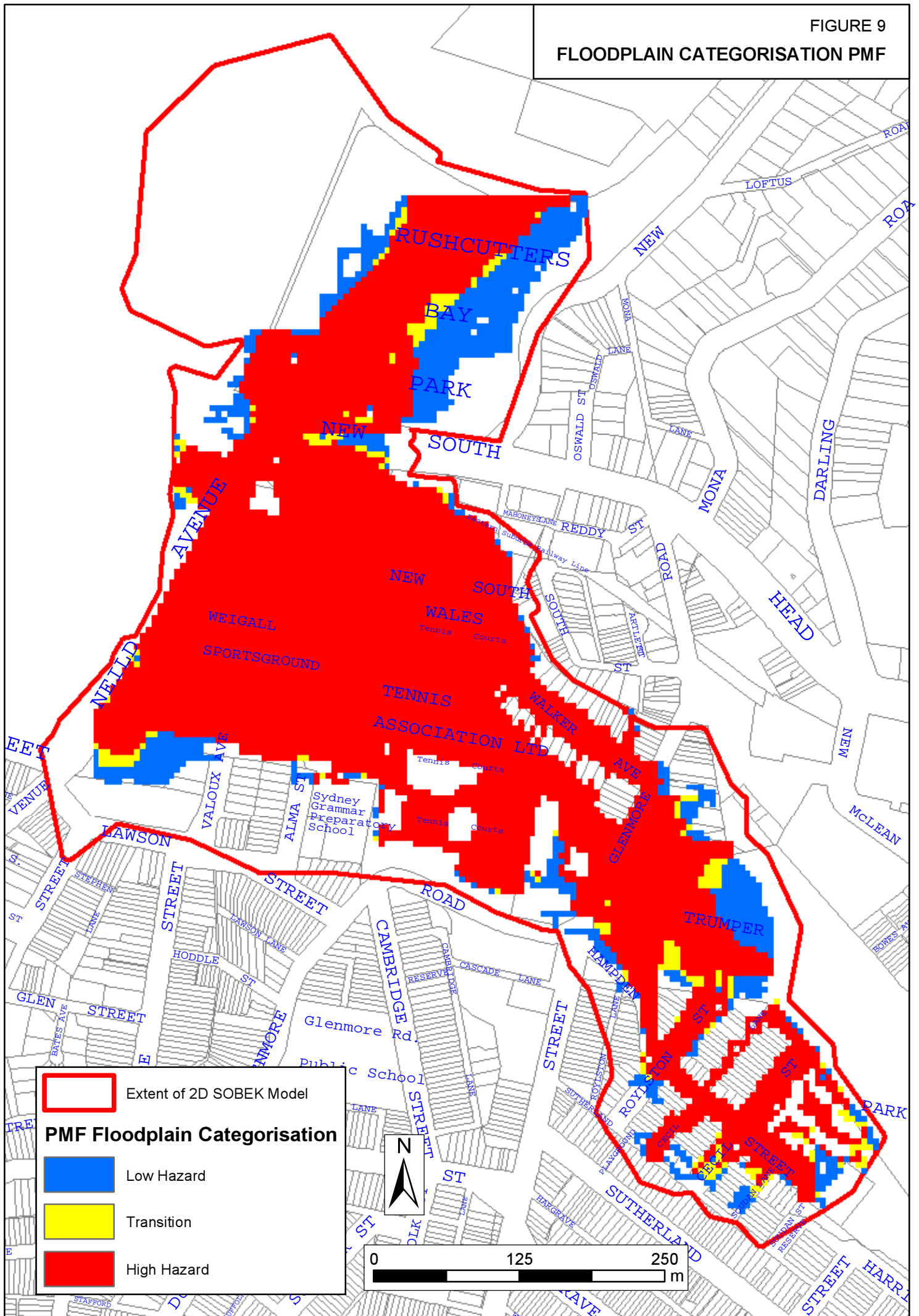
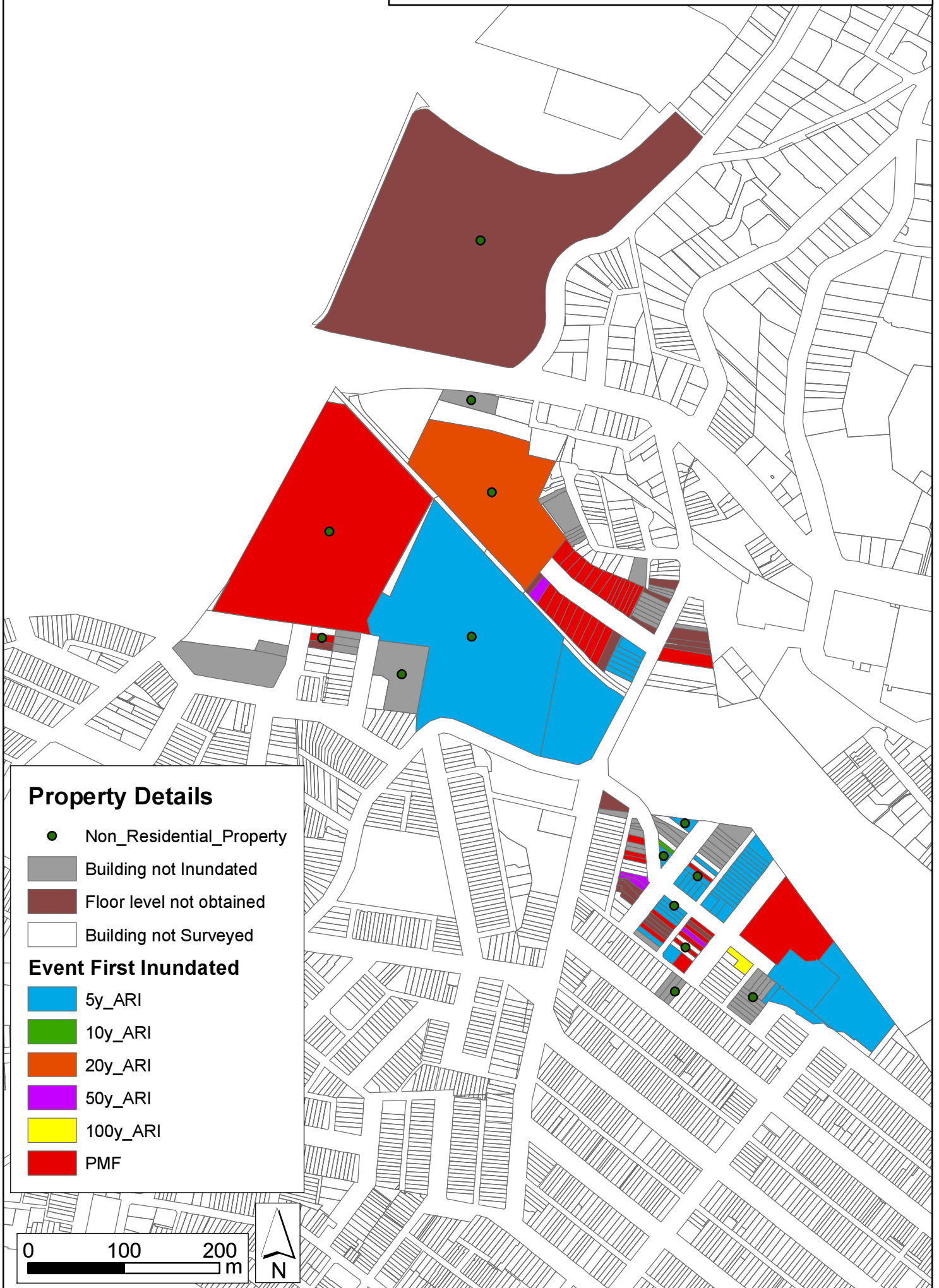


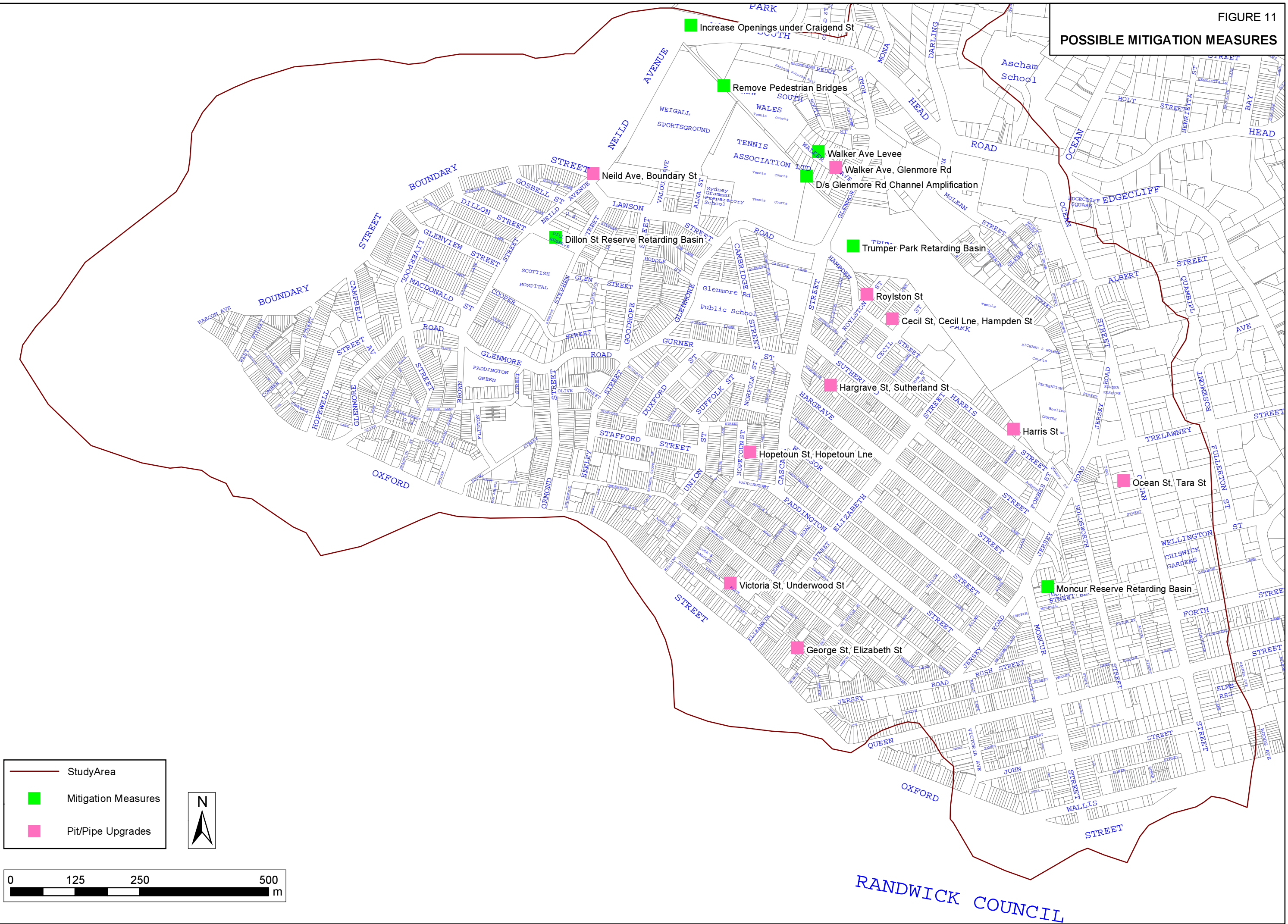
FIGURE 9
FLOODPLAIN CATEGORISATION PMF



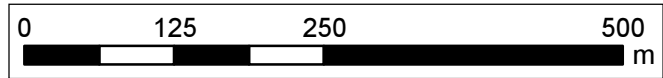
FLOOD LIABLE BUILDINGS WITHIN LOWER CATCHMENT



POSSIBLE MITIGATION MEASURES



— StudyArea
 ■ Mitigation Measures
 ■ Pit/Pipe Upgrades



RANDWICK COUNCIL