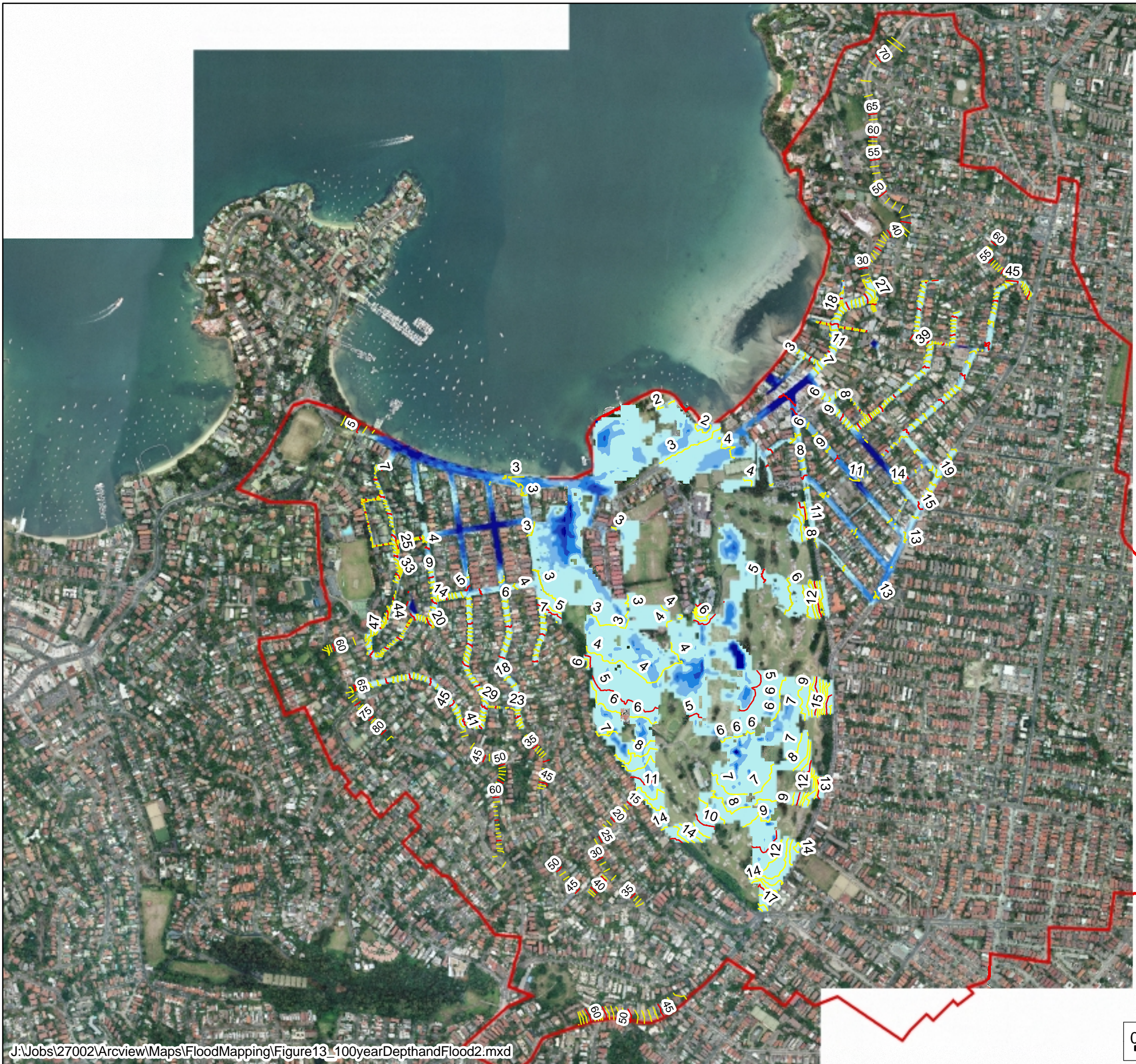


100 YEAR ARI FLOOD DEPTHS AND CONTOURS



NOTE: Flood depths within the 1D channel areas are not shown

**Legend**

- Study Area
- Intermediate Contour (1m)
- Major Contour (5m)

**Peak Depth (m)**

- < 0.2
- 0.2 - 0.4
- 0.4 - 0.6
- 0.6 - 0.8
- > 0.8

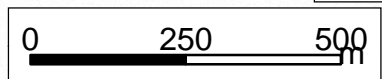
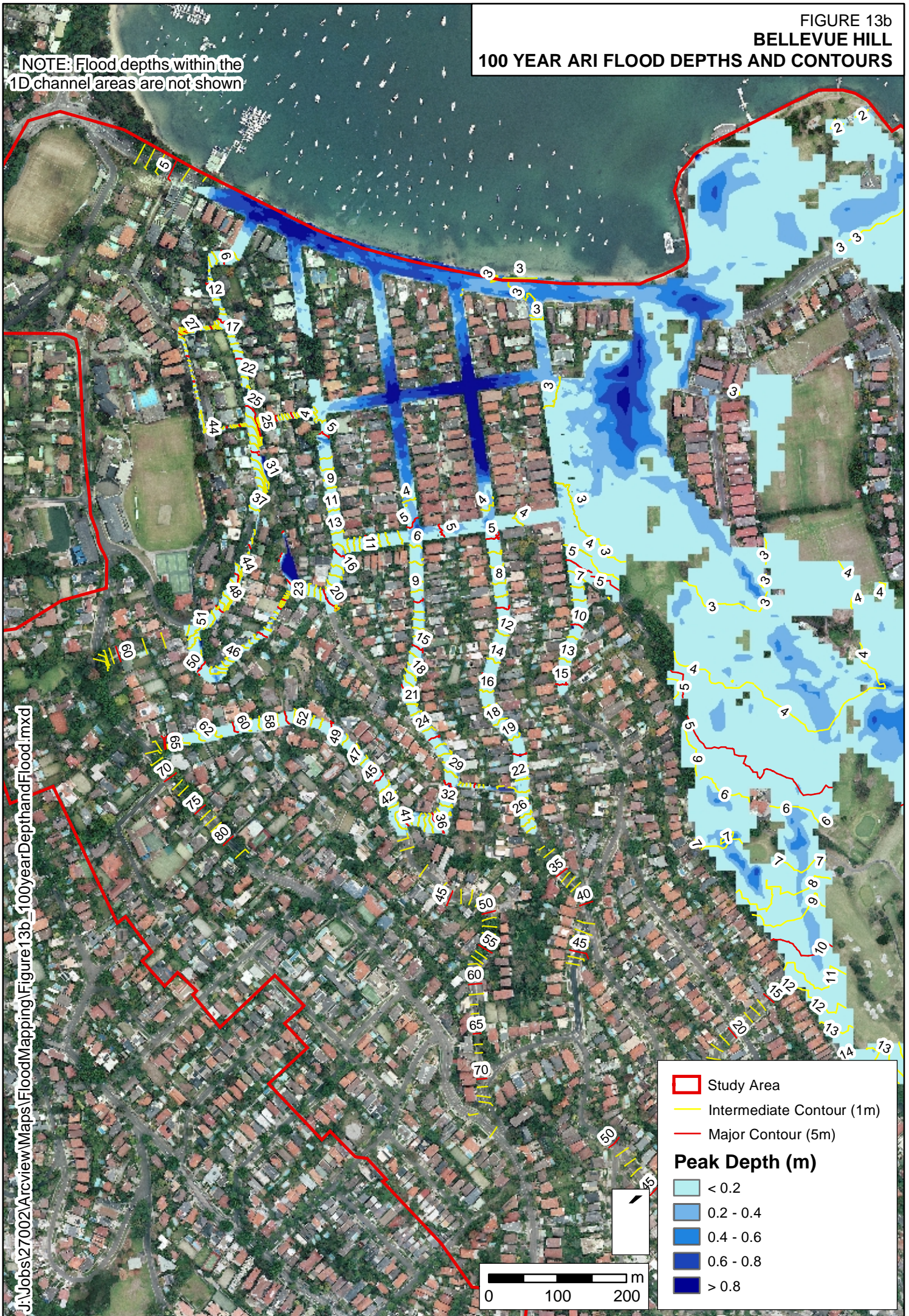


FIGURE 13b  
BELLEVUE HILL

100 YEAR ARI FLOOD DEPTHS AND CONTOURS

NOTE: Flood depths within the 1D channel areas are not shown



▭ Study Area  
- - - Intermediate Contour (1m)  
— Major Contour (5m)

**Peak Depth (m)**

□	< 0.2
□	0.2 - 0.4
□	0.4 - 0.6
□	0.6 - 0.8
□	> 0.8

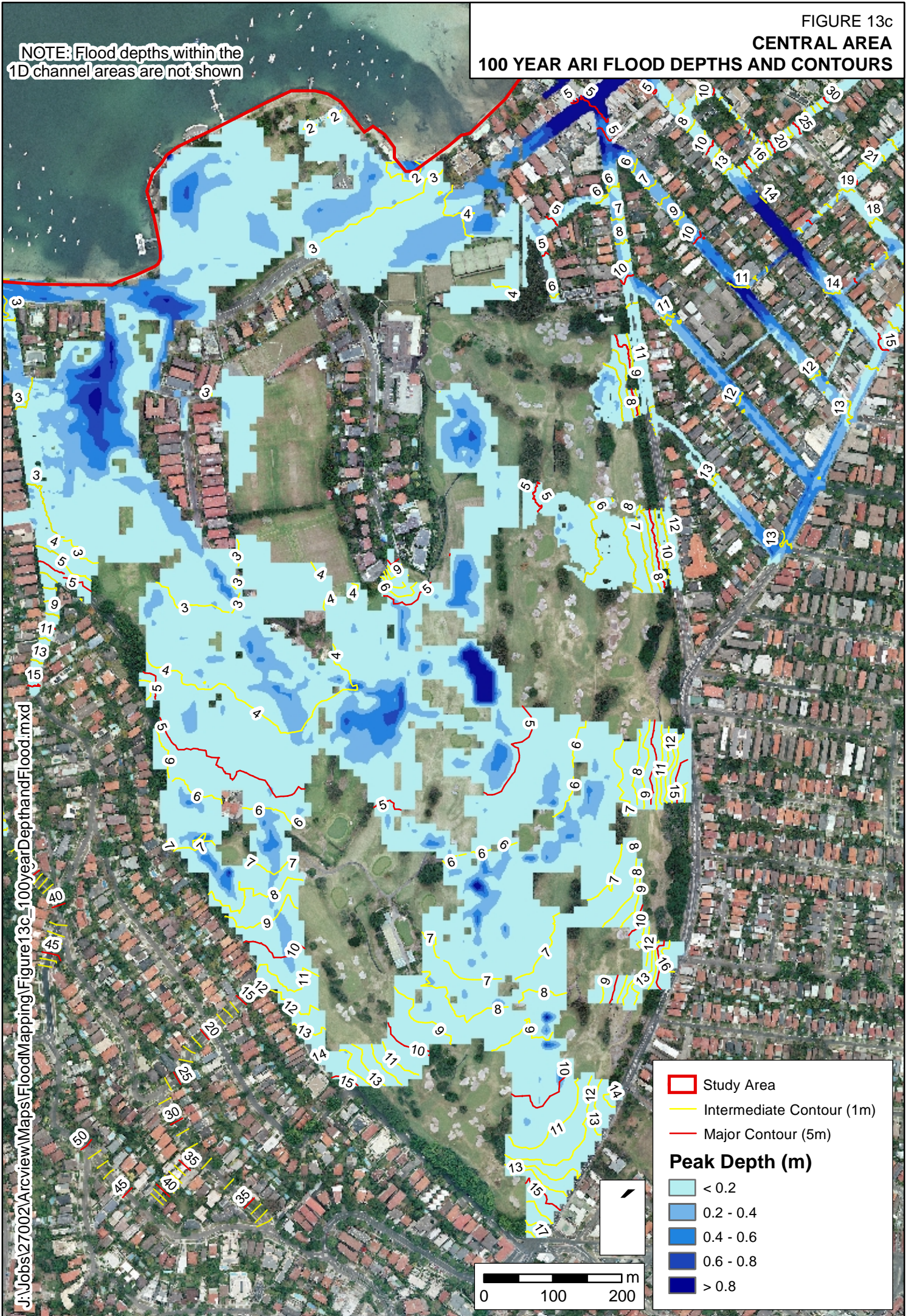
J:\Jobs\27002\Arcview\Maps\FloodMapping\Figure 13b\_100yearDepthandFlood.mxd

FIGURE 13c

**CENTRAL AREA**

**100 YEAR ARI FLOOD DEPTHS AND CONTOURS**

NOTE: Flood depths within the 1D channel areas are not shown



J:\Jobs\27002\Arcview\Maps\FloodMapping\Figure13c\_100yearDepthandFlood.mxd

FIGURE 13d

ROSE BAY

100 YEAR ARI FLOOD DEPTHS AND CONTOURS

NOTE: Flood depths within the 1D channel areas are not shown

