

Woollahra Environmental Targets Summary Table 2013:2014

In 2010 the NSW government introduced Integrated Planning and Reporting Legislation. As part of this process Council has reviewed its 'State of the Environment' reporting process to more effectively track sustainability and environmental progress. Council has developed specific targets across five sectors; Energy, Water, Biodiversity, Transport and Waste.

Woollahra Municipal Council's Environmental Sustainability Action Plan (ESAP) was completed in June 2013, and details our targets and actions in each area.

This report outlines progress against our ESAP targets.





Energy & Emissions



20% REDUCTION in CONSUMPTION at top sites by: **2017**

50kW RENEWABLE ENERGY installed on Council facilities by: **2017**

30% REDUCTION of greenhouse gas EMISSIONS by: **2025**

- + Energy consumption at the top 10 sites increased from 3769 GJ in 2012-13 to 3791 GJ in 2013-14
- + GHG Emissions reduced from 6249 tCO2e in 2012-13 to 6091 tCO2e in 2013-14
- + Solar Hot Water systems were installed at 5 Council facilities in 2013-14

*Due to improvements in the accuracy of historical energy consumption data, the baseline figure and target were updated. The current target is 4384 tCO2 e by 2025.

Water



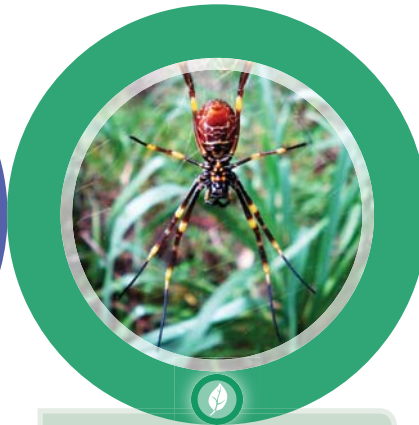
30% REDUCTION on 2004/05 usage by: **2017**

80% of top ten water using sites have **STORMWATER** harvesting systems by: **2025**

80% of top ten water using sites have **RAINWATER** harvesting systems by: **2025**

- + Water consumption has increased since 2004-05. Council is continuing to find new ways to improve water efficiency
- + 20% of top ten water using sites have stormwater or rainwater harvesting systems
- + Parsley Bay stormwater harvesting system completed. Expansion of the stormwater harvesting system at Christison Park is being investigated

Biodiversity



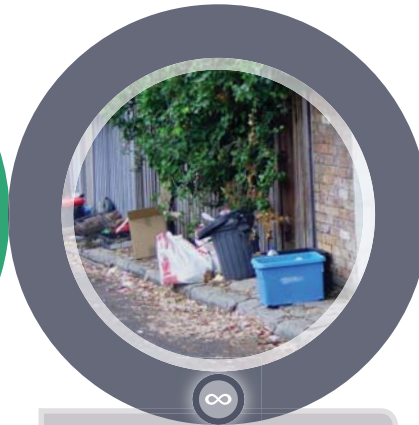
75% of **BUSHLAND** under **REGENERATION** by: **2017**

15% of **BUSHLAND** **FULLY REGENERATED** by: **2017**

- + 70.8% of bushland* is under regeneration
- + **TARGET ACHIEVED** 18.8% of bushland* is fully regenerated.
- + 4183 native trees were planted in 2013-14

* Bushland – Areas of Gap Park, Cooper Park, Parsley Bay Reserve, Harbour View Park and Trumper Park. Trumper Park does not include remnant vegetation, and is a revegetation (not regeneration) site.

Waste



66% WASTE DIVERSION from landfill by: **2014**

20% increase in **HOME COMPOSTING**

20% increase in **PUBLIC PLACE RECYCLING** by: **2017**

- + 46.2% of domestic waste was diverted from landfill in 2013-14
- + The Compost Revolution Project has diverted 191 tonnes of food waste from landfill in 2013-14
- + Public place recycling is currently available at 3 Council parks

Transport



30km of roads within the LGA have **DESIGNATED BIKE LANES** by: **2025**

100% cars offered in **CARSHARE PROGRAMS** in the LGA are **FUEL-EFFICIENT VEHICLES** by: **2017**

- + 2.4km of bike lanes were installed in 2013-14
- + **TARGET ACHIEVED.** 100% of the cars offered in carshare programs have a green star rating of 4 stars (out of 5) or higher
- + 2 bus shelters were upgraded in 2013-14
- + 6 new bicycle racks were installed in 2013-14

Targets

2013:14 Status