
draft

Woollahra Local Environmental Plan 1995 (Amendment No 52)

under the

Environmental Planning and Assessment Act 1979

I, the Minister Assisting the Minister for Infrastructure and Planning (Planning Administration), make the following local environmental plan under the *Environmental Planning and Assessment Act 1979*.

Minister Assisting the Minister for Infrastructure
and Planning (Planning Administration)

Deleted material

Added material

draft

Clause 1

Woollahra Local Environmental Plan 1995 (Amendment No 52)

Woollahra Local Environmental Plan 1995 (Amendment No 52)

under the

Environmental Planning and Assessment Act 1979

1. Name of plan

This plan is *Woollahra Local Environmental Plan 1995 (Amendment No 52)*.

2. Aims of plan

The aims of this plan are:

- (a) to add properties to the schedule of heritage items,
- (b) to create a heritage conservation area, and
- (c) to add properties to the schedule of heritage items forming a heritage item group.

3. Land to which plan applies

This plan applies to land within the local government area of Woollahra shown by distinctive colouring and edged heavy black in the set of maps marked “Woollahra Local Environmental Plan 1995 (Amendment No 52) – Heritage Conservation Map sheets 1 to 9”, deposited in the office of Woollahra Council.

4. Amendment of Woollahra Local Environmental Plan 1995

Woollahra Local Environmental Plan 1995 is amended as set out in Schedule 1

draft

Schedule 1

Woollahra Local Environmental Plan 1995 (Amendment No 52)

Schedule 1 Amendments

[1] Schedule 1 Definitions

Insert in appropriate order in the definition of *heritage conservation map*:

Woollahra Local Environmental Plan 1995 (Amendment No 52) –
Heritage Conservation Map

[2] Schedule 3 Heritage items

Insert in appropriate order of street, suburb and street number the following words:

Annandale Street,	Darling Point	8	<i>Balgowan</i> - house and grounds
Balfour Road,	Rose Bay	9	<i>St Bernard Hall</i> - residential flat building and grounds
Balfour Road,	Rose Bay	19	<i>Wycombe</i> - residential flat building and grounds - Balfour Road heritage item group (see also 21, 23 and 25 Balfour Road, Rose Bay)
Balfour Road,	Rose Bay	21	Residential flat building and grounds - Balfour Road heritage item group (see also 19, 23 and 25 Balfour Road, Rose Bay)
Balfour Road,	Rose Bay	23	Residential flat

draft

Schedule 1

Woollahra Local Environmental Plan 1995 (Amendment No 52)

			building and grounds - Balfour Road heritage item group (see also 21, 23 and 25 Balfour Road, Rose Bay)
Balfour Road,	Rose Bay	25	<i>Springfield</i> - residential flat building and grounds - Balfour Road heritage item group (see also 19, 21 and 23 Balfour Road, Rose Bay)
Balfour Road, outside properties within road reservation,	Rose Bay	13-31 18-36	Avenue of Plane trees and Fig trees
Carthona Avenue,	Darling Point	2	<i>Neidpath</i> - house and grounds
Darling Point Road,	Darling Point	14a	<i>Barbiston</i> - residential flat building, grounds and sandstone wall to street
Darling Point Road,	Darling Point	28	House and grounds
Darling Point Road,	Darling Point	54	Gateposts to former house <i>Denholm</i> – Goomerah Crescent/ Yarranabbe Road/ Darling Point Road heritage item group (see also 9 Goomerah Crescent, Darling Point and 28 Yarranabbe

draft

Schedule 1

Woollahra Local Environmental Plan 1995 (Amendment No 52)

			Road, Darling Point)
Eastbourne Road,	Darling Point	7	House and grounds
Eastbourne Road,	Darling Point	23	Chiltern house and grounds
Goomerah Crescent,	Darling Point	9	Sandstone retaining walls, balustrade and stone stair rockface to the former house <i>Denholm</i> - Goomerah Crescent/ Yarranabbe Road/ Darling Point Road heritage item group (see also 54 Darling Point Road, Darling Point and 28 Yarranabbe Road, Darling Point)
Greenoakes Avenue,	Darling Point	10	<i>Glenires</i> - house and grounds
Kent Road,	Rose Bay	all	Fig trees, Eucalypts, palms and Jacarandas
Kent Road,	Rose Bay	4a	<i>Fermoyle</i> - residential flat building and grounds <u>front fence</u>
Kent Road,	Rose Bay	16	<i>Sherland Lodge</i> - house and grounds
Kent Road,	Rose Bay	17	<i>Samares</i> - house and grounds

draft

Schedule 1

Woollahra Local Environmental Plan 1995 (Amendment No 52)

Kent Road,	Rose Bay	19	<i>The Knoll</i> - house and grounds
Kent Road,	Rose Bay	20	<i>Tudor House</i> - residential flat building and grounds
Kent Road,	Rose Bay	32	House and grounds
Latimer Road,	Bellevue Hill	1	<i>Phillip Court</i> - residential flat building and grounds - Latimer Road heritage item group (see also 101 O'Sullivan Road, Bellevue Hill)
Mona Road,	Darling Point	14	<i>Wyralla</i> - house, grounds and sandstone retaining wall to Mona Lane
Mona Road,	Darling Point	15	Mona Road heritage item group - semi-detached house, grounds, and sandstone retaining wall to street – (see also 17 Mona Road, Darling Point)
Mona Road,	Darling Point	16	<i>Mindarraba</i> - house, grounds and sandstone retaining wall to Mona Lane
Mona Road,	Darling Point	17	Mona Road heritage item group - semi-detached house, grounds and sandstone

draft

Schedule 1

Woollahra Local Environmental Plan 1995 (Amendment No 52)

			retaining wall to street – (see also 15 Mona Road, Darling Point)
Mona Road,	Darling Point	18	<i>Brereton</i> - former house, grounds and sandstone retaining wall to Mona Lane
Mona Road,	Darling Point	20	<i>Winburn</i> - house and grounds and sandstone retaining wall to Mona Lane
Mona Road,	Darling Point	21	<i>Greycliffe Flats</i> - house, grounds and sandstone retaining wall to street
Mona Road,	Darling Point	23	<i>Greycliffe Flats</i> - house, grounds and sandstone retaining wall to street
Mona Road,	Darling Point	25-27	<i>The Grange</i> - residential flat building, grounds and brick retaining wall to street
Mona Road,	Darling Point	36a	<i>Gwelo</i> - former house and grounds
New South Head Rd,	Rose Bay	633	<i>Murong</i> - house and grounds
O’Sullivan Road,	Rose Bay	51-55	Former service station and grounds

draft

Schedule 1

Woollahra Local Environmental Plan 1995 (Amendment No 52)

O'Sullivan Road,	Rose Bay	75	Avoca - house and grounds
O'Sullivan Road,	Rose Bay	79	<i>Darnley</i> - residential flat building and grounds
O'Sullivan Road,	Bellevue Hill	97	<i>Avalon</i> - residential flat building and grounds
O'Sullivan Road,	Bellevue Hill	101	<i>Beresford Court</i> - residential flat building and grounds - Latimer Road heritage item group (see also 1 Latimer Road, Bellevue Hill)
O'Sullivan Road,	Bellevue Hill	285	Residential flat building, shops, garage and grounds
Oswald Lane,	Darling Point	10	<i>Thanet</i> - house, grounds, sandstone retaining walls
Salisbury Road,	Rose Bay	23	<i>Simcha</i> - house and grounds
Yarranabbe Road,	Darling Point	5-9	Former house and grounds
Yarranabbe Road,	Darling Point	12-14	House and grounds
Yarranabbe Road,	Darling Point	28	House - Goomerah Crescent/ Yarranabbe Road/ Darling Point Road heritage item

draft

Schedule 1

Woollahra Local Environmental Plan 1995 (Amendment No 52)

group (see also 54
Darling Point Road,
Darling Point and 9
Goomerah Crescent,
Darling Point)

[3] Schedule 3 Heritage items

Delete

~~*Eastbourne Road, Darling Point 23 Cook Pine*~~

and insert

Eastbourne Rd, Darling Pt 23 *Chiltern - house, Cook Pine and grounds.*



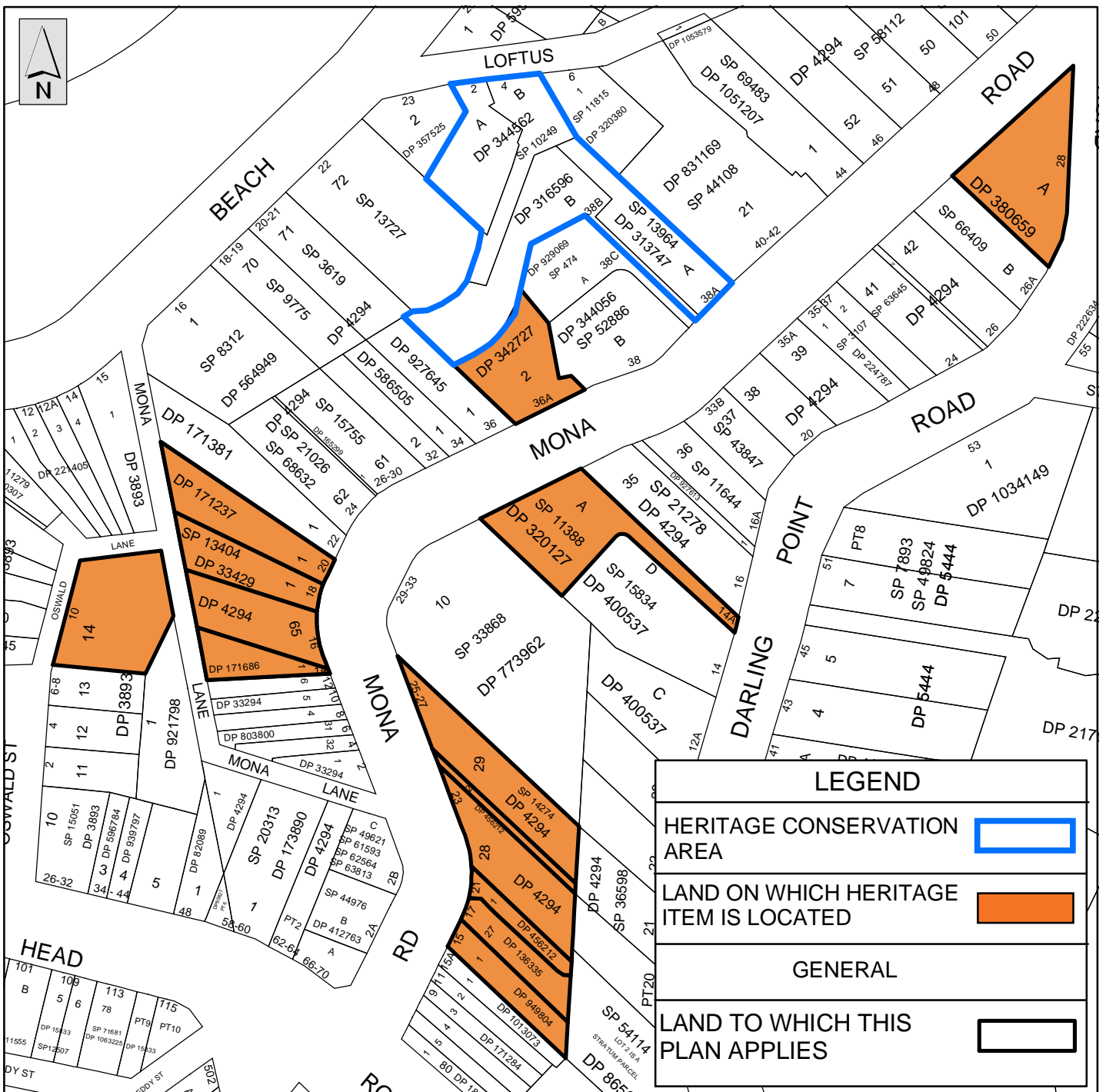
Scale 1:2,000

Locality of Darling Point

**ENVIRONMENTAL PLANNING AND ASSESSMENT ACT 1979
WOOLLAHRA LOCAL ENVIRONMENTAL PLAN 1995
(AMENDMENT NO. 52) - Heritage Conservation Map**

Sheet 1 of 9

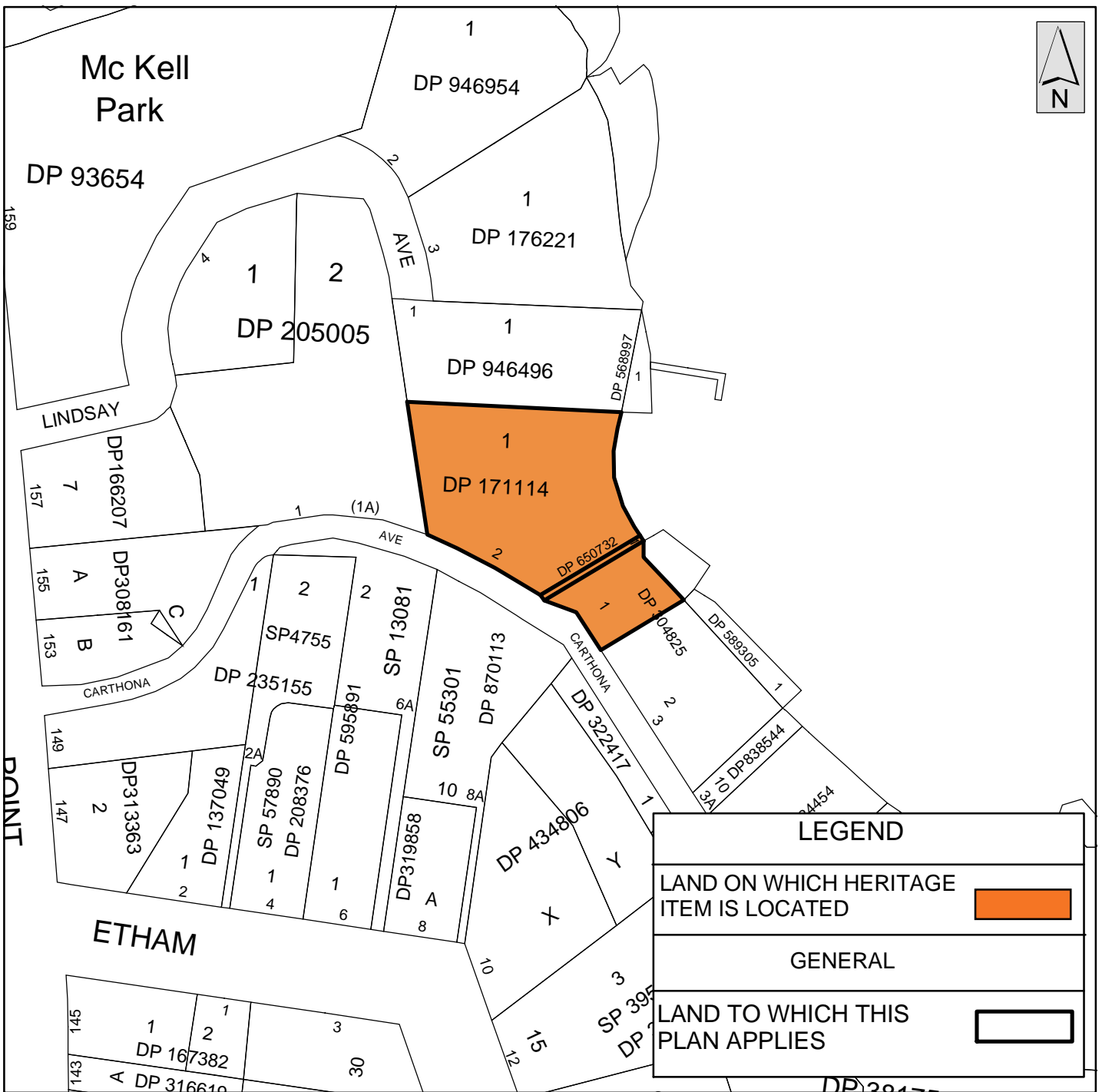
DRAWN BY Karen Lasky	DATE 20 November 2003	STATEMENT OF RELATIONSHIP WITH OTHER PLANS Amends Woollahra Local Environmental Plan 1995
SUPERVISING DRAFTPERSON	DATE 20 November 2003	
PLANNING OFFICER George Losonci	DATE 20 November 2003	
FILE No. CCL.1064.G.(Amendment 52)	DEPT Strategic Planning	PUBLISHED IN GOVERNMENT GAZETTE OF
CERTIFICATE ISSUED UNDER S.65 E.P.A. ACT. 1979	DATE 19 December 2003	CERTIFIED IN ACCORDANCE WITH THE ENVIRONMENTAL PLANNING AND ASSESSMENT ACT 1979 AND REGULATION GENERAL MANAGER DATE



Scale 1:1,700

Locality of Darling Point

ENVIRONMENTAL PLANNING AND ASSESSMENT ACT 1979 WOOLLAHRA LOCAL ENVIRONMENTAL PLAN 1995 (AMENDMENT NO. 52) - Heritage Conservation Map Sheet 2 of 9		
DRAWN BY Karen Lasky DATE 20 November 2003	STATEMENT OF RELATIONSHIP WITH OTHER PLANS Amends Woollahra Local Environmental Plan 1995	
SUPERVISING DRAFTER DATE 20 November 2003		
PLANNING OFFICER George Losonci DATE 20 November 2003		
FILE No. CCL.1064.G. (Amendment 52) DEPT Strategic Planning	PUBLISHED IN GOVERNMENT GAZETTE OF	
CERTIFICATE ISSUED UNDER S.65 E.P.A. ACT. 1979 DATE 19 December 2003	CERTIFIED IN ACCORDANCE WITH THE ENVIRONMENTAL PLANNING AND ASSESSMENT ACT 1979 AND REGULATION GENERAL MANAGER DATE	



Scale 1:1,300

Locality of Darling Point

**ENVIRONMENTAL PLANNING AND ASSESSMENT ACT 1979
WOOLLAHRA LOCAL ENVIRONMENTAL PLAN 1995
(AMENDMENT NO. 52) - Heritage Conservation Map**

Sheet 5 of 9

DRAWN BY Karen Lasky	DATE 20 November 2003	STATEMENT OF RELATIONSHIP WITH OTHER PLANS Amends Woollahra Local Environmental Plan 1995
SUPERVISING DRAFTERPERSON	DATE 20 November 2003	
PLANNING OFFICER George Losonci	DATE 20 November 2003	
FILE No. CCL. 1064.G. (Amendment 52)	DEPT Strategic Planning	PUBLISHED IN GOVERNMENT GAZETTE OF
CERTIFICATE ISSUED UNDER S.65 E.P.A. ACT. 1979	DATE 19 December 2003	CERTIFIED IN ACCORDANCE WITH THE ENVIRONMENTAL PLANNING AND ASSESSMENT ACT 1979 AND REGULATION
		GENERAL MANAGER DATE



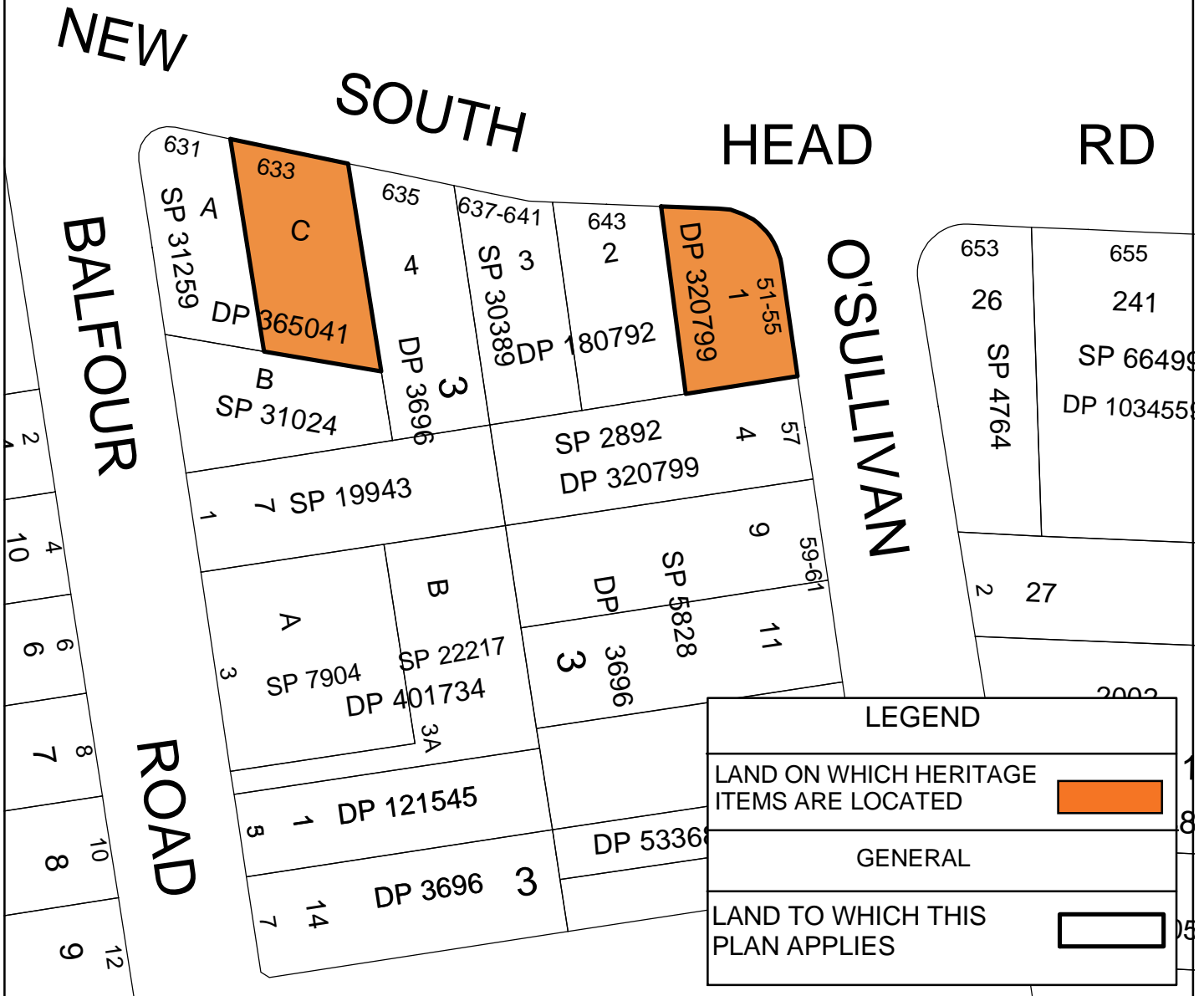
Scale 1:2,700

Locality of Rose Bay

**ENVIRONMENTAL PLANNING AND ASSESSMENT ACT 1979
 WOOLLAHRA LOCAL ENVIRONMENTAL PLAN 1995
 (AMENDMENT NO. 52) - Heritage Conservation Map**

Sheet 6 of 9

DRAWN BY Karen Lasky	DATE 20 November 2003	STATEMENT OF RELATIONSHIP WITH OTHER PLANS Amends Woollahra Local Environmental Plan 1995
SUPERVISING DRAFTERPERSON	DATE 20 November 2003	
PLANNING OFFICER George Losonci	DATE 20 November 2003	
FILE No. CCL.1064.G. (Amendment 52)	DEPT Strategic Planning	PUBLISHED IN GOVERNMENT GAZETTE OF
CERTIFICATE ISSUED UNDER S.65 E.P.A. ACT. 1979	DATE 19 December 2003	CERTIFIED IN ACCORDANCE WITH THE ENVIRONMENTAL PLANNING AND ASSESSMENT ACT 1979 AND REGULATION
		GENERAL MANAGER DATE



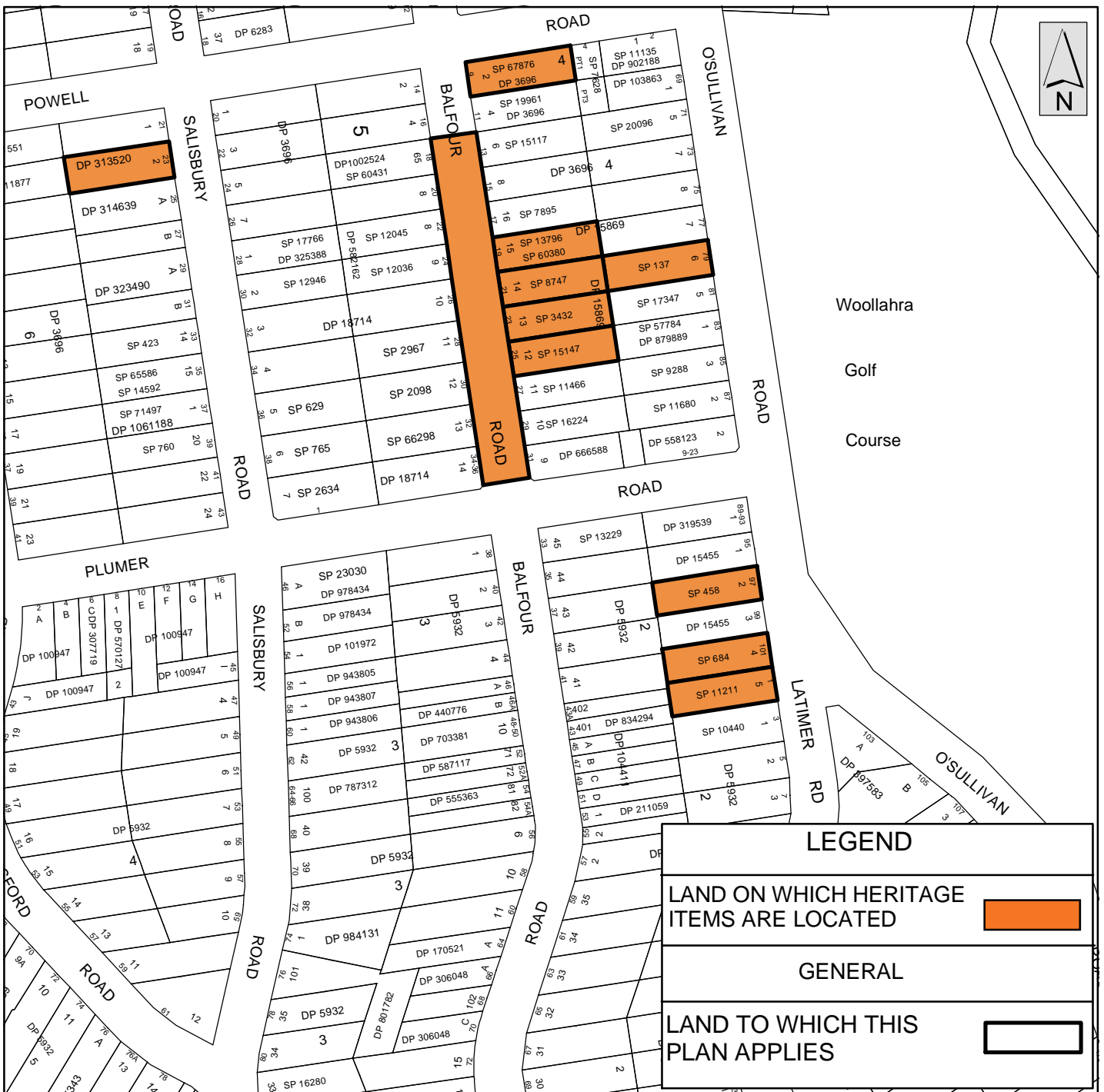
Scale 1:940

Locality of Rose Bay




**ENVIRONMENTAL PLANNING AND ASSESSMENT ACT 1979
WOOLLAHRA LOCAL ENVIRONMENTAL PLAN 1995
(AMENDMENT NO. 52) - Heritage Conservation Map**

Sheet 7 of 9

DRAWN BY Karen Lasky	DATE 20 November 2003	STATEMENT OF RELATIONSHIP WITH OTHER PLANS Amends Woollahra Local Environmental Plan 1995
SUPERVISING DRAFTERPERSON	DATE 20 November 2003	
PLANNING OFFICER George Losonci	DATE 20 November 2003	
FILE No. CCL. 1064.G. (Amendment 52)	DEPT Strategic Planning	PUBLISHED IN GOVERNMENT GAZETTE OF
CERTIFICATE ISSUED UNDER S.65 E.P.A. ACT. 1979	DATE 19 December 2003	CERTIFIED IN ACCORDANCE WITH THE ENVIRONMENTAL PLANNING AND ASSESSMENT ACT 1979 AND REGULATION GENERAL MANAGER DATE



Woollahra
Golf
Course

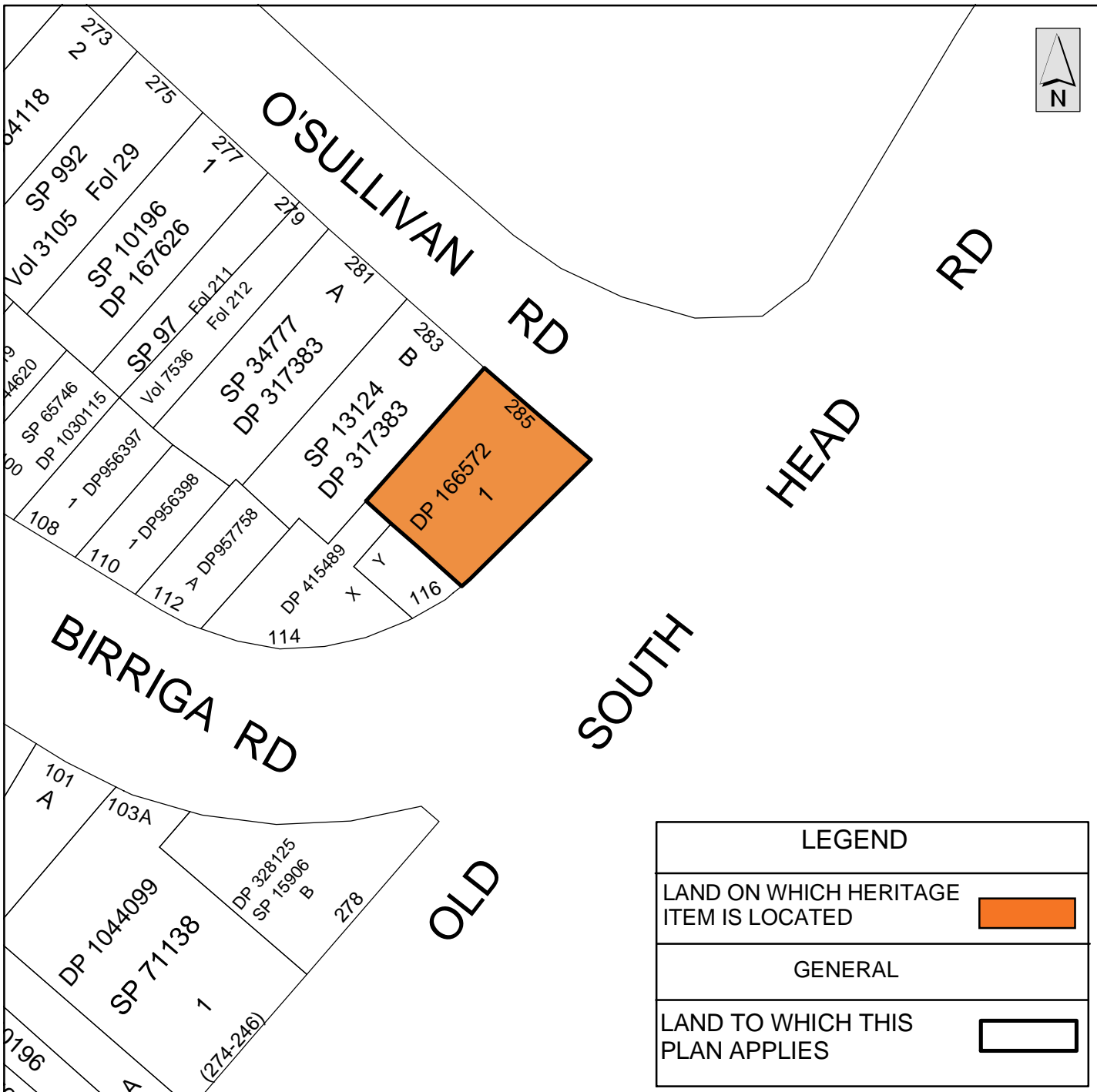
LEGEND	
LAND ON WHICH HERITAGE ITEMS ARE LOCATED	
GENERAL	
LAND TO WHICH THIS PLAN APPLIES	

Scale 1:2,500

Locality of Rose Bay and Bellevue Hill

**ENVIRONMENTAL PLANNING AND ASSESSMENT ACT 1979
WOOLLAHRA LOCAL ENVIRONMENTAL PLAN 1995
(AMENDMENT NO. 52) - Heritage Conservation Map
Sheet 8 of 9**

DRAWN BY Karen Lasky	DATE 20 November 2003	STATEMENT OF RELATIONSHIP WITH OTHER PLANS Amends Woollahra Local Environmental Plan 1995
SUPERVISING DRAFTERPERSON	DATE 20 November 2003	
PLANNING OFFICER George Losonci	DATE 20 November 2003	
FILE No. CCL.1064.G.(Amendment 52)	DEPT Strategic Planning	PUBLISHED IN GOVERNMENT GAZETTE OF
CERTIFICATE ISSUED UNDER S.65 E.P.A. ACT. 1979	DATE 19 December 2003	CERTIFIED IN ACCORDANCE WITH THE ENVIRONMENTAL PLANNING AND ASSESSMENT ACT 1979 AND REGULATION
		GENERAL MANAGER DATE



Scale 1:1,000

Locality of Bellevue Hill

**ENVIRONMENTAL PLANNING AND ASSESSMENT ACT 1979
WOOLLAHRA LOCAL ENVIRONMENTAL PLAN 1995
(AMENDMENT NO. 52) - Heritage Conservation Map**

Sheet 9 of 9

DRAWN BY Karen Lasky	DATE 20 November 2003	STATEMENT OF RELATIONSHIP WITH OTHER PLANS Amends Woollahra Local Environmental Plan 1995
SUPERVISING DRAFTERPERSON	DATE 20 November 2003	
PLANNING OFFICER George Losonci	DATE 20 November 2003	
FILE No. CCL. 1064.G. (Amendment 52)	DEPT Strategic Planning	PUBLISHED IN GOVERNMENT GAZETTE OF
CERTIFICATE ISSUED UNDER S.65 E.P.A. ACT. 1979	DATE 19 December 2003	CERTIFIED IN ACCORDANCE WITH THE ENVIRONMENTAL PLANNING AND ASSESSMENT ACT 1979 AND REGULATION GENERAL MANAGER DATE