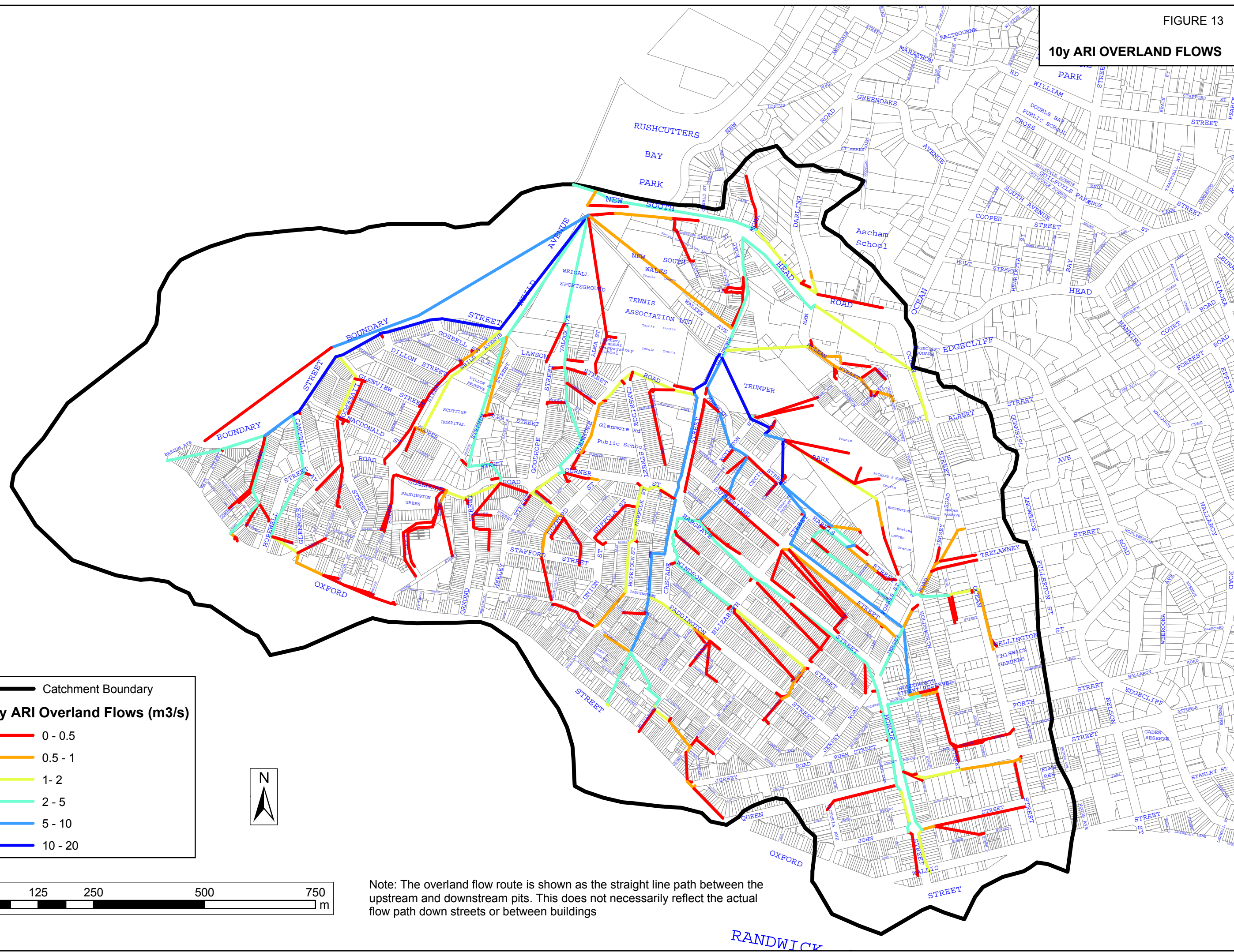


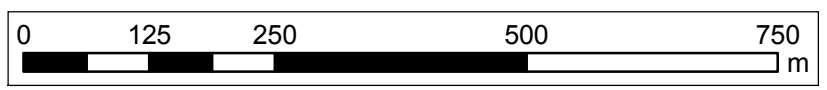
10y ARI OVERLAND FLOWS



— Catchment Boundary

10y ARI Overland Flows (m³/s)

- 0 - 0.5
- 0.5 - 1
- 1 - 2
- 2 - 5
- 5 - 10
- 10 - 20



Note: The overland flow route is shown as the straight line path between the upstream and downstream pits. This does not necessarily reflect the actual flow path down streets or between buildings